

# Modeling Division (Complete groups)

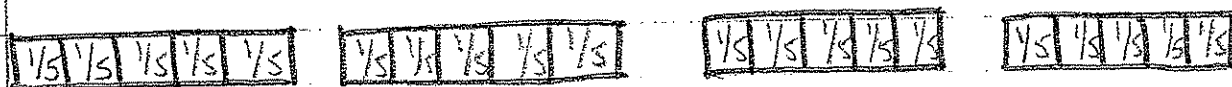
Ex 1  $4 \div \frac{2}{5}$

How many groups of  $\frac{2}{5}$ 's are in 4 wholes?

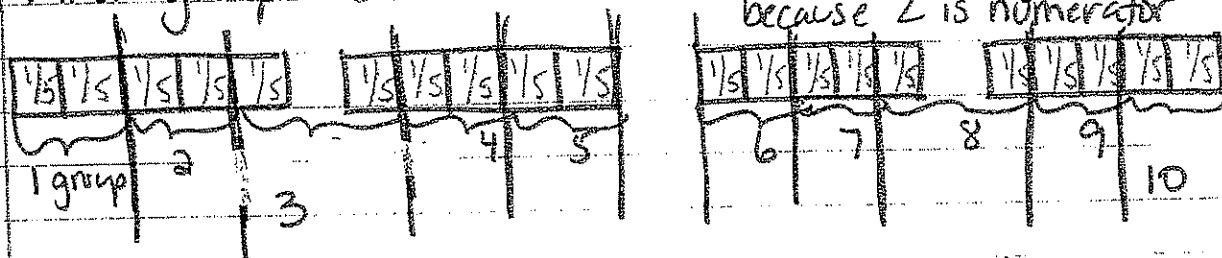
① Draw 4 wholes



② Divide into 5ths because that is the denominator



③ Find groups of  $\frac{2}{5}$ 's  $\checkmark$  2  $\rightarrow$   $\frac{1}{5}$ 's in each group because 2 is numerator

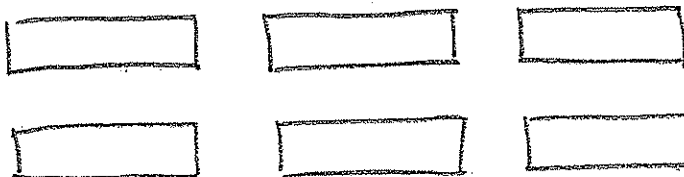


There are 10 groups of  $\frac{2}{5}$ 's in 4

$$4 \div \frac{2}{5} = 10$$

you try:

A  $6 \div \frac{2}{3}$



B  $5 \div \frac{5}{6}$

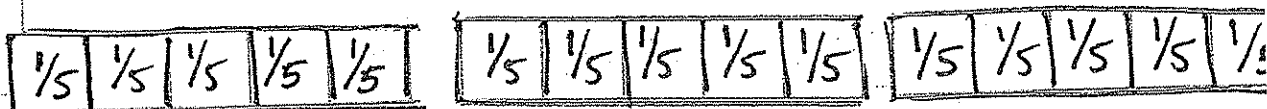


# Modeling Division (incomplete groups)

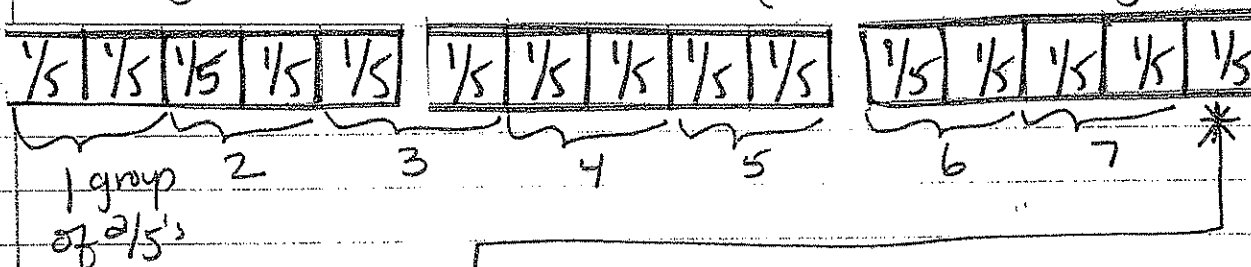
Ex 2  $3 \div \frac{2}{5}$

How many groups of  $\frac{2}{5}$ 's are in 3 wholes?

- ① Draw 3 wholes, then divide into 5<sup>ths</sup> because that is the denominator.



- ② Find groups of  $\frac{2}{5}$ 's  $\swarrow$  groups of 2  $\rightarrow$  numerator  
(2  $\rightarrow$   $\frac{1}{5}$ 's per group)



7 whole groups of  $\frac{2}{5}$ 's

\* what about this  $\frac{1}{5}$  that doesn't make a whole group?

- We need 2 but only have 1
- We have 1 out of the 2
- We have  $\frac{1}{2}$  left so,...

Note:  
since  $\frac{2}{5}$  is our group use numerator as new denominator for partial groups

7 wholes  $\frac{1}{2}$  of another

There are  $7\frac{1}{2}$  two-fifths in 3 wholes.

you try (circle numerator - it will be denominator of partial group)

c)  $5 \div \frac{2}{3}$

--	--	--	--	--

d)  $4 \div \frac{3}{5}$

--	--	--	--

e)  $4 \div \frac{1}{3}$

--	--	--	--

f)  $3 \div \frac{4}{5}$

g)  $4 \div \frac{2}{5}$